

# Culture and Communities Select Committee

18 JANUARY 2018

STEPHANIE ROGERS, PROGRAMME MANAGER

# Country Park Transformation

**“Once in a generation opportunity to  
create a suite of modern  
21st Century parks that are  
operationally self financing”**

# Outcomes

Financially self sustaining

Improved play,  
activities, facilities  
and learning

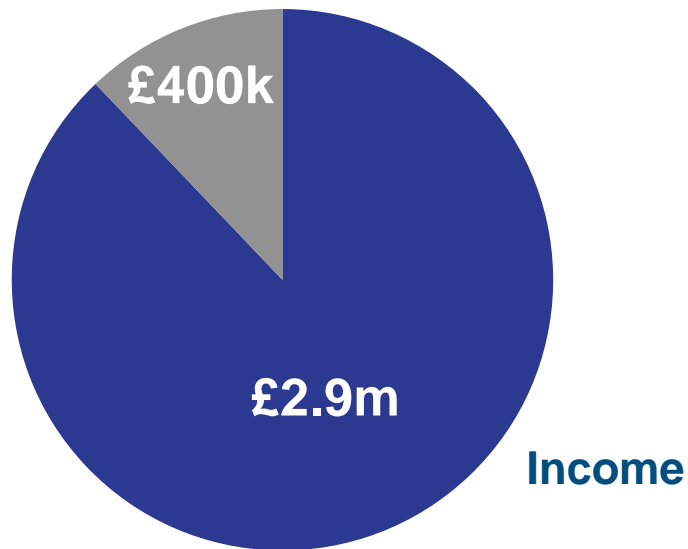
Increased visitor  
numbers,  
satisfaction and  
spend

Improved partner/  
community  
relationships

# Business Case

Invest to generate income and meet our current cost to HCC

Cash Limit



£3.3m turnover

- HCC
- Service capital receipt
- External funding



# What People Told Us

**Adventure  
& Natural  
Play**

**Trails &  
Paths**

**Signage &  
Information**

**Improved  
Catering**

**More  
Events**

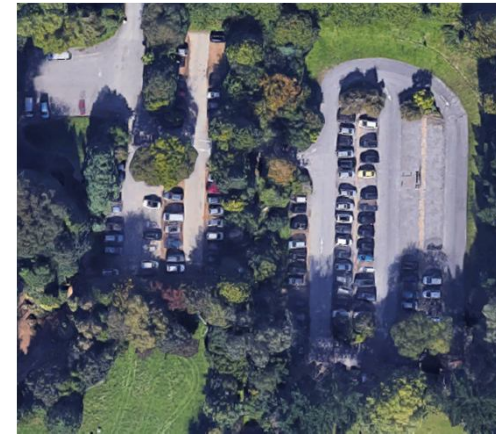
# Improving our Offer



**Play**



**Commercial Activities**



**Car Parking**



**Catering**

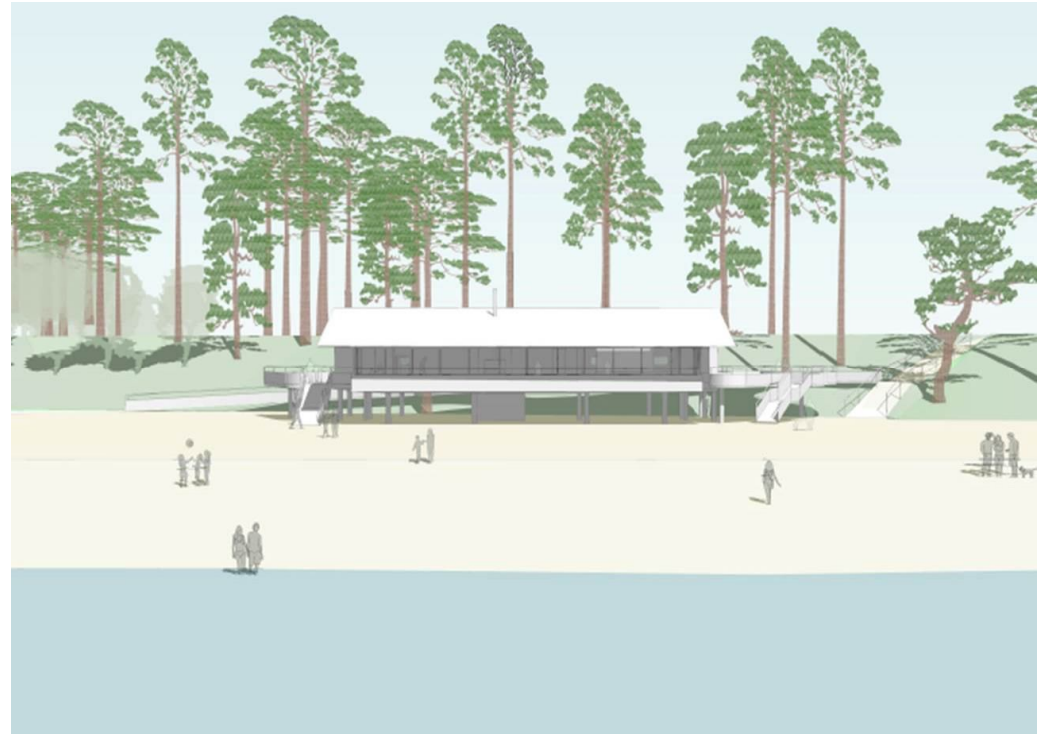


**Information & interpretation**



**HAMPSHIRE  
COUNTRYSIDE  
SERVICE**

**Marketing/Digital**



### **£2.9m Scheme. £850k funding EM3 LEP**

- **New visitor centre including cafe, toilets, reception, offices**
- **New outdoor play opportunities and trails**
- **Sensory garden - built by Friends - complete**
- **On schedule to complete Spring 2018**

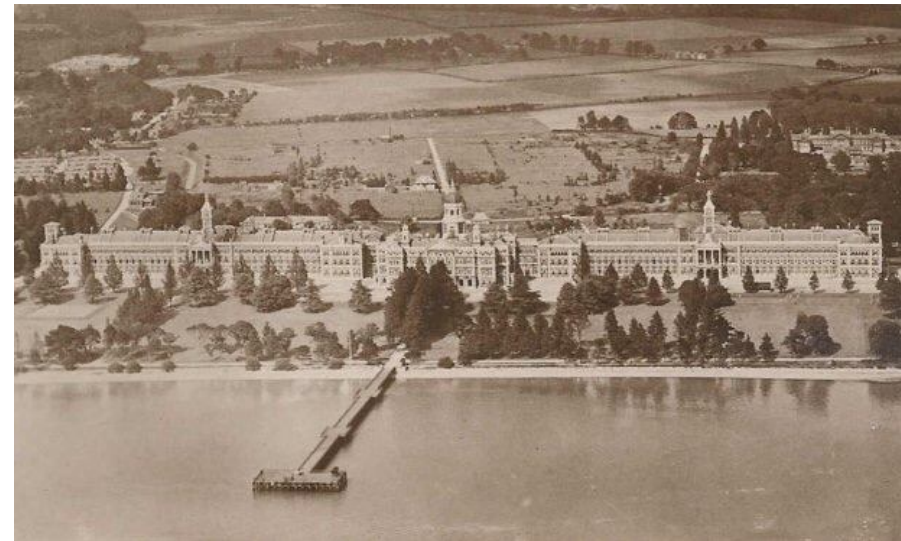


**Follow on Twitter @LepeCountryPark #LoveLepe**



**£3.5m Scheme**  
**£2m funded from Heritage Lottery Fund**

- Chapel project on schedule to complete
- Spring 2018
- New play completed
- Further funding required to improve the cafe and Empire Room



Follow on Twitter @RoyalVictoriaCP

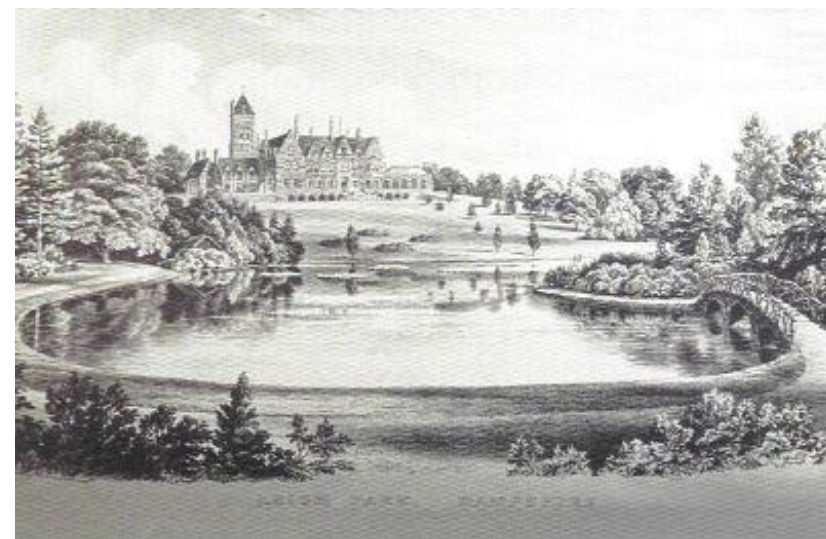




# Staunton Country Park

**£4m Scheme. £2.85m funded by HLF**

- New cafe in the Coach House
- Restoration of historic landscape features
- New facilities to support community enterprise
- New car park
- Completion Spring 2019

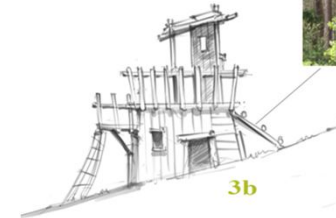


Follow on  
Twitter  
[@Staunton  
country](https://twitter.com/Stauntoncountry)



## £1.95m Scheme Including £163k funding by Armed Forces Covenant Fund

- Visitor centre reconfigured to improve cafe, shop and offices
- New play and fitness for families & dogs
- Improved trails and facilities for cycling
- Other works due to complete early 2019



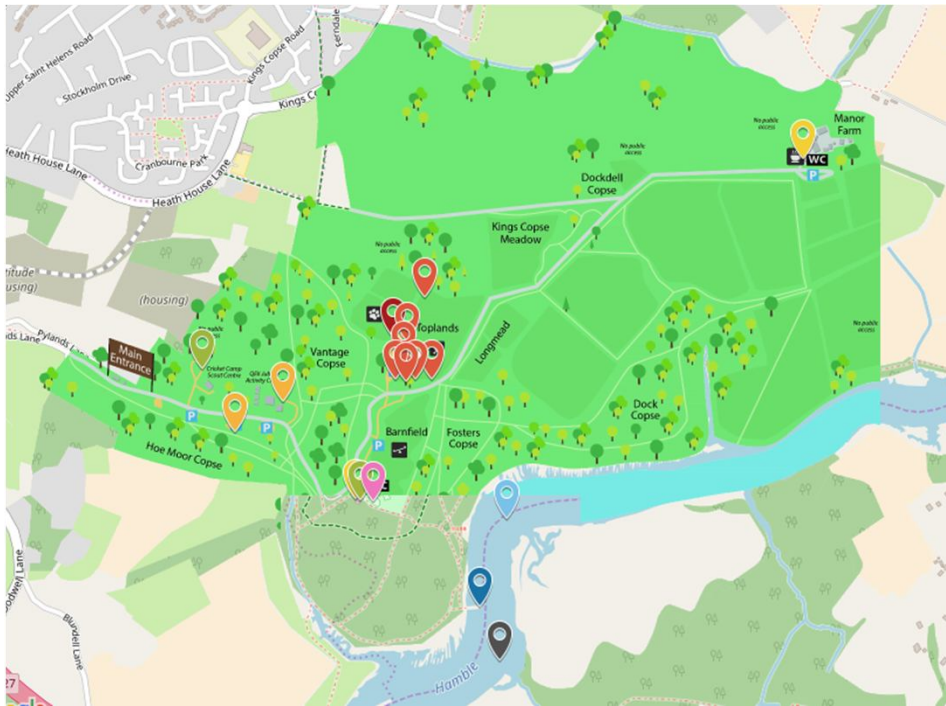
Follow on Twitter @QECP





## £850k Scheme

- Create a focal point in the Park
- Improved catering offer with outdoor seating
- Better play and trails
- Hub for other commercial activities
- Feb 2019



Follow on Twitter  
[@ManorFarmCP](https://twitter.com/ManorFarmCP)

# Farm Attractions - Manor Farm & Staunton



## Funding required - £1m

- Increasing health & safety requirements
- Need for improved facilities for animal welfare
- Both cafes require further investment
- Improved activities



# Titchfield Haven



National Nature Reserve

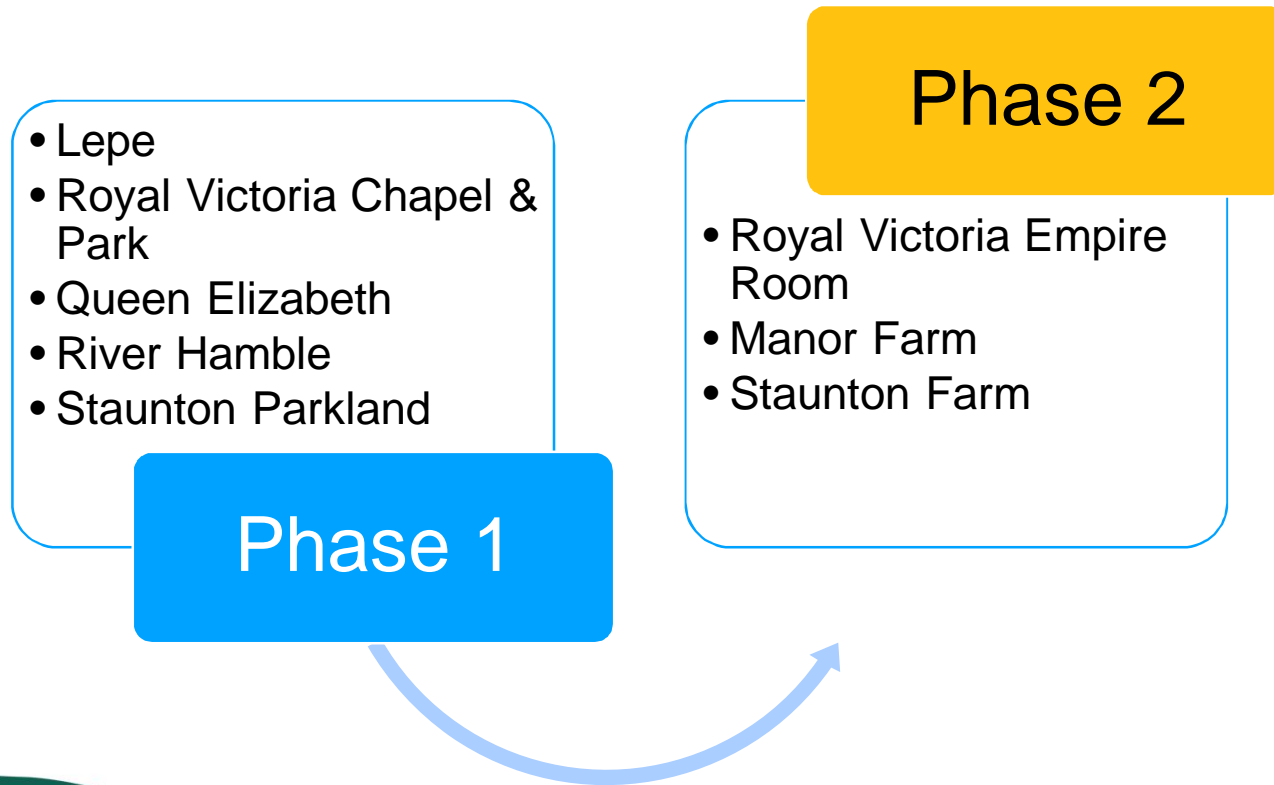
- Working with Hampshire and IOW Wildlife Trust
  - Agree scope of the project and funding
  - Report from WWT to assist in the future management requirements
- Minor refurbishment to public areas



Follow on Twitter @Titchfieldhaven



# Programme Phasing



**Thank you**  
**Any Questions?**

This page is intentionally left blank